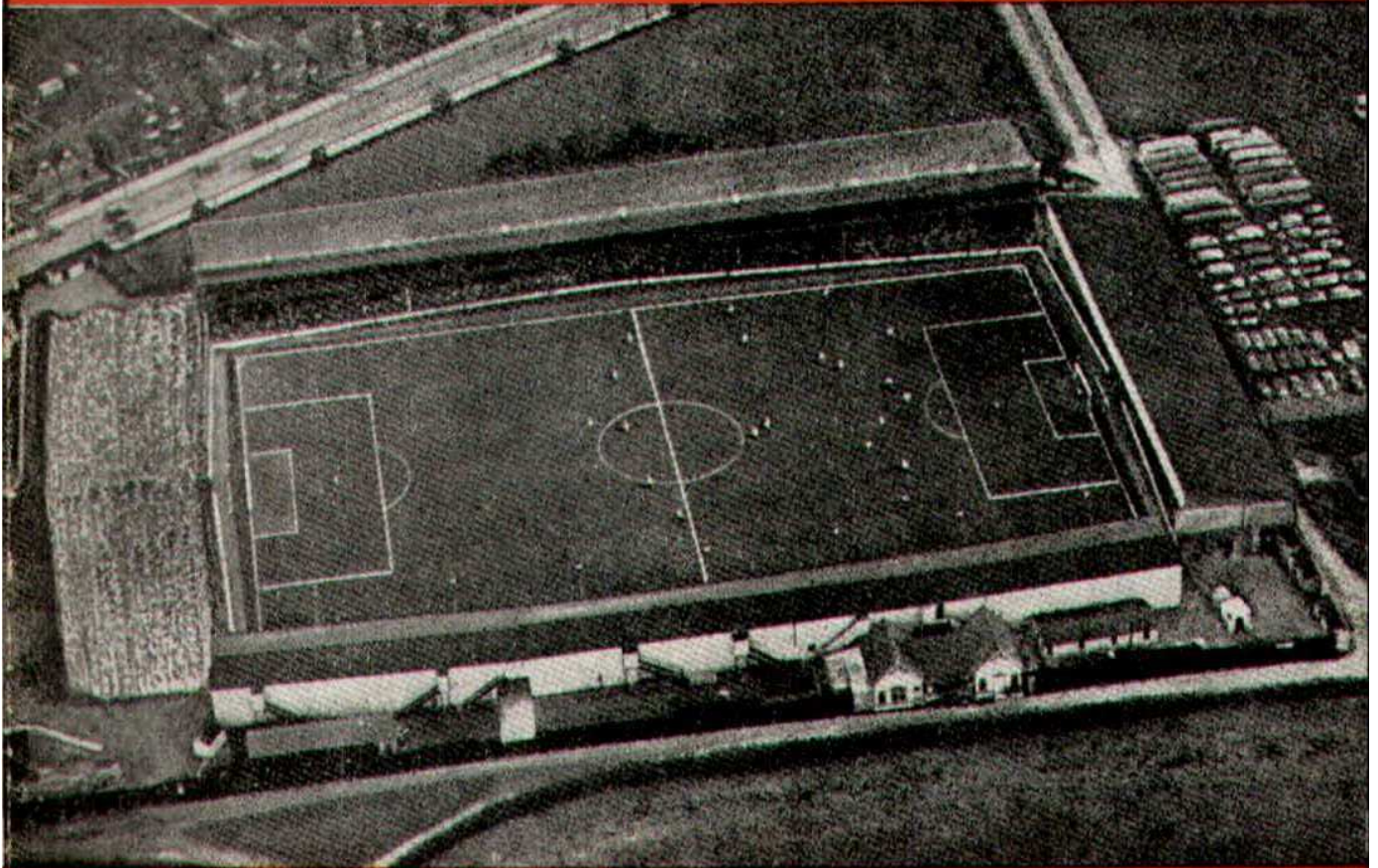




# SWINDON TOWN FOOTBALL CLUB



SATURDAY, NOVEMBER 11th, 1961

DIVISION III

**SWINDON T. v. SHREWSBURY**

Kick-off 3 p.m.

*Official Programme* **4d.**

---

**SOUTHERN LAUNDRY  
CO. LTD.**

*Launderers and Dry Cleaners*



TELEPHONE 4161

STATION RD., SWINDON

**GO MODERN — GO ELECTRIC**

for

TELEVISION, RADIO AND  
DOMESTIC APPLIANCES

**D. ROBSON**

22 HAVELOCK STREET

6602

Swindon

6602

---

*Make your Goal the*

**EAGLE HOTEL**

(Prop.: Tom Hamilton)

WORTHINGTON :: GUINNESS

DEVENISH BEERS :: BASS

REGENT ST., SWINDON

---

**LITTLE & CO. LTD.**

The Name Linked with Service  
and Value

*The Popular Ladies' and Men's  
Complete Outfitters*



31-32 FLEET ST., SWINDON

Telephone 2831

---

**NEXT MATCH . . .**

FOOTBALL COMBINATION

**SWINDON T. v. SOUTHAMPTON**

TUESDAY NEXT, NOVEMBER 14th, 1961

Kick-off 7.30 p.m.

---

**Dr. BARNADO'S HOMES**

Take care of 7,500 needy children and  
still depend on public support

Send your donation to—

**Barnardo House, Stepney  
Causeway, London, E.1.**

Donated by: Mrs. S. Mutch, 60  
Cricklade Road, Swindon

---

**LEESE, ING & Co. Ltd.**

Incorporating BARKER & CO.

*Mineral Water and  
Squash Manufacturers*



**LANSDOWN RD., SWINDON**

Telephone 2744/2320

---

**HULFORD MOTORS Ltd.**

**SELF DRIVE HIRE**

\*\*\*

Fleet of 1961 Fords  
Populars - Anglias - Consuls

\*\*\*

**SHRIVENHAM ROAD**

(200 yards from Football Ground)

Phone 4934

LARGE CAR PARK AVAILABLE

---

For Quality  
FLOWERS, FRUIT & VEGETABLES  
Also FROZEN FOODS

**CLARKE'S  
of Old Swindon**

Proprietors: A. G. G. & J. A. W. HUNT

64 DEVIZES ROAD - SWINDON

'Phone: 2337

ORDERS DELIVERED

# SWINDON TOWN FOOTBALL COMPANY LIMITED

Registered Office: COUNTY GROUND, SWINDON

—+—  
Directors:

Mr. W. J. CASTLE (Chairman)

Mr. H. E. LANE (Vice-Chairman)

Mr. B. T. HAMILTON (Hon. Treasurer)

Messrs. C. CHANDLER, J.P., J. DAVIES,

R. FRICKER, C. J. GREEN, F. PLYER, H. WILLIAMS and K. H. WILMER

Manager: B. J. HEAD.

Secretary: R. A. MORSE

---

**VOL. 12**

**SATURDAY, NOVEMBER 11th, 1961**

**No. 13**

---

## Club Notes

A few weeks ago we asked: "How many of our supporters can, with any certainty, forecast the results of our matches?"

The last two games produced quite a reversal of form. In the Bradford match, Swindon was two goals down after thirty minutes, yet the final result was three goals to two in our favour. The Kettering game: sixty minutes gone, Swindon leading by two goals to nil, and quietly coasting to victory; then suddenly an unexpected goal against. The game quickly came to life, and two minutes later the penalty decision, and the scores being made level. A great pity, which goes to prove one must not take things or opponents too lightly.

People wonder what has just gone wrong with our team. The confidence and rhythm is still not there. While the defence make errors which result in goals

against, many get the impression that far too much work is being thrown on it.

These notes, unfortunately, have to be written before the replay. we can only hope more will be done to ease the pressure on the defence, and there will be a tightening up and great determination and spirit all round.

Kettering will be more than ever keen to win, in view of the draw. As they are only fourteen miles north of Northampton, a match there would be a tremendous local "derby". The draw, will, no doubt, augment the gate at the replay.

The Cup always produces surprise results. Probably the outstanding one was the defeat at home of Bournemouth, the club top of Division 3. Several teams

Continued on page 4

---

## THE WALCOT CHEMIST

WIDE RANGE OF COSMETICS, PERFUMES,  
BABY NEEDS AND PHOTOGRAPHIC GOODS

10 SUSSEX SQUARE - WALCOT  
TEL. 6680

---

## M. J. REYNOLDS

*Grocer*

152/154 CRICKLADE ROAD  
5479 SWINDON 5479

COOKED HAM OUR SPECIALITY

---

## WATSON'S CENTRAL NEWSAGENCY

LTD.

*Swindon's Leading Wholesaler*

1 WELLINGTON STREET, SWINDON  
Tel. 2049

---

## L. WOLLEN

OFF LICENCE

*WINES & SPIRITS*

Arkell's Ales and Stout

373 Cricklade Rd., Swindon  
Deliveries Daily Phone 3508

---

### CLUB NOTES—continued

fought back when several goals in arrears. Colchester drew 3—3 at Peterborough, after being 3 goals down after seventy-five minutes — quite a feat! Others which came back were Dartford and West Auckland. Mention should also be made of Hereford City's 1-1 draw at Bristol City. As for the second round draw, what an attraction—Weston-super-Mare v. Crystal Palace. Ground accommodation at Weston, 400.

We cannot get away from cup-ties, because our opponents this afternoon recall those stirring games last season in the League Cup Competition. Three matches closely contested, and then a few weeks later Shrewsbury visited the County Ground in the second round of the F.A. Cup, to win by the narrow margin of the only goal scored. Surely it is Swindon's turn to win today.

Up the Robins! Good luck!

---

FOR ALL YOUR ANGLING NEEDS  
CONSULT

## FRANK WOODWARD

Swindon's Fishing Tackle Specialist

25 HAVELOCK ST., SWINDON  
PHONE 3879

---

WE ARE SPECIALISTS IN —  
OUTSIDE CATERING AND LICENSED BARS  
FOR WEDDINGS, FETES, SPORTS DAYS, etc.

## THE MASONS ARMS HOTEL

31 HIGH STREET - SWINDON 3522

---

## H. E. LANE

(REGENT STREET) LTD.

*The Pork Sausage Specialists*

117 Victoria Road, Swindon  
Telephone: 2336

---

## COMLEY'S

*Modern Music Centre*

26 HAVELOCK ST., SWINDON

RECORDS - MUSIC - INSTRUMENTS

Top Twenty "Pops" always in stock  
and wide selection of Jazz and Classics

PERSONAL SUPERVISION Phone 3874

## FIXTURES AND RESULTS TO DATE

### DIVISION III

1961

Aug. 19	Portsmouth	H	1-3
21	Coventry City	A	1-2
26	Crystal Palace	A	1-3
29	Coventry City	H	3-3
Sept. 2	Bournemouth	H	1-1
4	Queen's Park R.	A	1-6
9	Watford	A	0-2
16	Hull City	H	1-1
19	Barnsley	H	1-1
23	Northampton T.	A	2-1
27	Barnsley	A	2-6
30	Lincoln City	H	4-0
Oct. 3	Grimsby Town	H	0-0
7	Brentford	A	0-1
10	Grimsby Town	A	1-0
13	Reading	H	4-1
17	Queen's Park R.	H	0-0
21	Bristol City	A	3-5
28	Bradford	H	3-2
Nov. 4	(1) Kettering T.	H	2-2
8	Kettering T.	A	0-3
11	Shrewsbury Tn.	H	
18	Peterborough U.	A	
25	(2)		
Dec. 2	Newport County	A	
9	Southend U.	H	
16	Portsmouth	A	
23	Crystal Palace	H	
26	Halifax Town	A	
30	Halifax Town	H	

1962

Jan. 6	(3) Notts County	A	
13	Bournemouth	A	
20	Watford	H	
27	(4) Port Vale	H	
Feb. 3	Hull City	A	
10	Northampton T.	H	
17	(5) Lincoln City	A	
24	Brentford	H	
Mar. 2	Reading	A	
10	(6) Bristol City	H	
17	Bradford	A	
24	Notts County	H	
31	(S.F.) Shrewsbury	A	
Apr. 7	Peterborough U.	H	
14	Port Vale	A	
20	Torquay Utd.	H	
21	Newport County	H	
23	Torquay Utd.	A	
28	Southend Utd.	A	
May 5	(Final)		

### FOOTBALL COMBINATION

1961

Aug. 22	Leyton Orient	H	0-0
Sept. 6	Southend Utd.	A	1-3
13	Portsmouth	A	1-7
20	Bournemouth	A	0-3
26	Birmingham	H	1-1
Oct. 4	Aldershot	A	1-2
10	Watford	H	1-3
Nov. 1	Millwall	A	0-1
7	Fulham	H	1-4
14	Southampton	H	
22	Coventry City	A	
29	Reading	A	
Dec. 5	Brighton	H	
12	Brentford	A	
19	Charlton	H	

1962

Jan. 3	Chelsea	A	
9	Chelsea	H	
17	Leyton Orient	A	
23	Portsmouth	H	
31	Birmingham City	A	
Feb. 6	Bournemouth	H	
13	Watford	A	
20	Aldershot	H	
26	Queen's Park R.	A	
Mar. 6	Millwall	H	
14	Fulham	A	
20	Southend Utd.	H	
28	Southampton	A	
Apr. 3	Coventry City	H	
10	Reading	H	
17	Brighton	A	
23	Brentford	H	
May 2	Charlton	A	
To be arranged Q.P.R.			

---

# Our Visitors

## SHREWSBURY TOWN F.C.

This afternoon we welcome to the County Ground our visitors from Shrewsbury. Our two teams met no fewer than six times last season and four of those games were at Swindon. The results were:—

- Swindon T. 1, Shrewsbury 1.  
(at Swindon)—League
- Shrewsbury 2, Swindon T. 2.  
(at Shrewsbury)—League
- Swindon T. 1, Shrewsbury 1.  
(at Swindon)—League Cup
- Shrewsbury 2, Swindon T. 2.  
(at Shrewsbury)—League Cup
- Swindon T. 0, Shrewsbury 2.  
(at Swindon)—League Cup
- Swindon T. 0, Shrewsbury 1.  
(at Swindon)—F.A. Cup

Details of the players from whom today's team will be chosen are as follows:—

### Michael Gibson (Goalkeeper)

Was signed from Nuneaton Borough in March, 1960. He is a native of Derby, and is an extremely well-built lad, standing 5ft. 10in. and weighing 12st. 6lb. A very daring and courageous goalkeeper.

### George Walters (Right Back)

One of the club's outstanding successes of last season after being converted from a wing half. He was signed by Shrewsbury from a Wolverhampton Works side (Jenks & Cottrel), and is also Wolverhampton-born. He was an amateur with the club before signing professional in February, 1957. Stands 6ft. and weighs 12st. 10lb.

### Gordon Skeech (Left Back)

Was born at Earlstown and joined Shrewsbury from Runcorn, the Cheshire League side, in 1954. A very strong tackler who stands 5ft. 10in. and weighs 11st. 4lb.

### Joe Wallace (Right Half)

He was found playing at a nearby Army camp and, after first signing as an amateur, turned professional in 1954 after being demobbed. He is a native of Glasgow, and was an ever-present last season. An extremely good ball player who stands 6ft. and weighs 10st. 13lb.

### Albert Harley (Wing Half)

He is a native of Chester and a product of the Cheshire junior club, Lache. Albert, who was previously a winger, was an amateur on the ground staff before signing professional in May, 1957. An excellent prospect who was also an ever-present last season.

### Dave Pountney (Wing Half)

Dave is equally at home at either wing half or inside forward and appeared in both positions last season. He is a native of Baschurch, Shropshire, and joined the club from Myddle, a local club, as an amateur in February, 1957. Signed professional in September, 1957. Stands 5ft. 9in. and weighs 12st.

### Mike Kenning (Outside Right)

A close-season signing from Aston Villa from whom much is expected. He is a native of Birmingham and stands 5ft. 8in. and weighs 10st. 10lb.

---

## C. Dunn & Son

BUILDERS & DECORATORS

Alterations, Renovations, Conversions  
Plumbers and Sanitary Engineers

503 CRICKLADE ROAD Tel. 2522

---

FOR PAINTS OF GOOD QUALITY  
**H. S. HODGES & SONS**  
(SWINDON) LTD.

CRICKLADE ROAD - SWINDON  
PHONE 2422

Dulux, Brolac, Friary, Valspar, Wallcharm, etc.

---

## NOTTON'S CAFE

COUNTY ROAD

200 yards from Ground

**RIGHT ON THE BALL**

---

## Harold Fleming

24 REGENT CIRCUS - SWINDON  
Phone 22813



FOR ALL SPORTS EQUIPMENT

Also, Scout, Guide, Cub and Brownie Wear

---

### OUR VISITORS—continued

#### Jimmy McLaughlin (O. Left)

An outstanding success last season at outside left after having been transferred from Birmingham City to fill the outside right position. Was second highest goal-scorer last season. He is an Irishman who was born at Londonderry, Northern Ireland, and stands 5ft. 10in. and weighs 11st.

#### Arthur Rowley (Inside Left)

Shot himself into the record books at the end of last season at Bradford City, when he scored the club's only goal and passed Dixie Dean's Football League goal-

scoring record of 379. Joined Shrewsbury as player-manager in June, 1958 after having previously been with West Brom, Fulham, and Leicester City. Was born at Wolverhampton.

#### Malcolm Starkey (Inside Right)

He is extremely fast and was signed from Blackpool in June, 1959. Is a native of Nottingham and a product of a Notts junior club and signed for Blackpool, as a professional, in August, 1954. A useful golfer. Stands 5ft. 8in. and weighs 11st. 2lb.

---

## GODDARD & Co.

*Wholesale and Retail*

WINE - SPIRIT - BEER  
AND CIDER MERCHANTS

•  
9 REGENT STREET, SWINDON  
Telephone 2415

•  
Also at  
4 WINGATE PARADE, SWINDON

We are your **Main Distributors** for  
**VAUXHALL** and **JAGUAR** cars  
**BEDFORD** Vans and Trucks, etc.

Any make of Car or Truck  
supplied - Used Vehicles a  
specialised part of our  
business.

•  
**SKURRAY'S**  
**SWINDON**

Telephone: 2266

# H. HIBBERD LTD.

Plant Hire Contractors

\*\*\*

TRACTORS and SCRAPERS  
BULLDOZERS  
DROTT SHOVELS  
DIGGERS  
ROAD ROLLERS

\*\*\*

40 NEWPORT STREET, SWINDON

Telephone 6125

# Swindon Bacon Curing Co. Ltd.

Specialists in  
Bacon, Pork & Cooked Ham

50 FLEET STREET  
SWINDON

Telephone: 2122

# WARNES (Swindon) Ltd.

Electrical Contractors  
Radio and Television

Contractors to:

SWINDON TOWN FOOTBALL CLUB

51/52 COMMERCIAL RD., SWINDON

'Phone 6346/7

160 COUNTY RD., SWINDON

'Phone 6346/7

9 SWINDON ST., HIGHWORTH

'Phone 379

7 CLIVE PARADE, SWINDON

'Phone 6346/7

# MILLS & MER

H  
O  
U  
S  
E  
F  
U  
R  
N  
I  
S  
H  
E  
R  
S

SWINDON TOWN v. SHREWSBURY T

SWINDON T

RIGHT WING

Colours: RED SHIRTS, V

Burton

Jones (2)

Morgan (4)

Owen (5)

Summerbee (7) Hunt, E. (8) McPherson

Referee—

Mr. K. G. Aston  
(Ilford)



McLaughlin (11) Rowley (10) Hines (

Harley (6)

Pountney (5)

Skeech (3) W

Gibson

SHREWSBURY T

LEFT WING

These teams are subject to

## DAY RETURN TICKETS

On Weekdays and Sundays (services permitting), available in each direction by any train the same day. From Swindon Junction to:-

2nd Class

Bath Spa 7/6d.

Bristol (T.M.) 9/0d.

Weston-super-Mare 11/6d.

Other fares available. Ask for pamphlet B7/411, giving full information.

BRITISH RAILWAYS

Western Region

# 16-17 BRIDGE ST. S

# W. B. CARTER

Newsagent, Tobacconist and Confectioner  
Large selection of Boxes of Chocolates  
always in stock

CORONA, TIZER, DRINKS, etc.

Agents for Wall's Ice Cream

\*\*\*

188/190 FERNDAL RD., SWINDON

Telephone: 3089

ENGLAND'S QUALITY  
SERVICE

Your Car washed in under

THE INSTANT C

6/- ANY MAKE — 4

Local Stations

MARLBOROUGH ROAD  
SWINDON

QUEENS ROAD  
READING



Make your goal . . .

# M'ILROYS RESTAURANT

Top of the Catering League  
COFFEE - LUNCHES - TEAS  
Parties catered for.  
Regent Street, Swindon. Tel. 5294

## THE PLESSEY COMPANY Ltd.

After years of achievement have great expansion plans for the future.

**TECHNICAL STAFF  
CLERICAL STAFF  
MANUAL WORKERS**

are essential for this progress.

Interested persons please apply to the Personnel Department.

## MERRICKS LTD.

NEWSBURY TOWN      Kick-off 3 p.m.  
SWINDON TOWN  
RED SHIRTS, WHITE SHORTS      LEFT WING  
Burton  
Trollope (3)  
Owen (5)      Woodruff (6)  
McPherson (9) Hunt. R. (10) Jackson (11)  
Linesmen —  
Red Flag —  
Mr. S. L. Evans (Neath)  
Yellow Flag —  
Mr. R. J. Ingram (Cardiff)  
(10) Hines (9) Starkey (8) Kenning (7)  
Muntney (5)      Wallace (4)  
(3) Walters (2)  
Gibson  
NEWSBURY TOWN  
are subject to alteration      RIGHT WING



UPHOLSTERERS • REMOVALS

ST. SWINDON      PHONE 5365

**QUALITY CAR WASHING SERVICE**  
d in under 5 minutes by  
**ANT CAR WASH**  
**KE — 4 WASHES £1**

ical Stations:  
QUEENS ROAD      QUEENS ROAD  
READING      BRISTOL

INSIST ON

# Garrard EQUIPMENT



For Superb Tape and Record Playing



Fitted by the World's leading manufacturers.

## WILSONS (SWINDON) LTD.

BUILDERS OF  
MODERN ATTRACTIVE HOUSES  
AND BUNGALOWS

All enquiries to Head Office:  
**90 COMMERCIAL ROAD  
SWINDON 6361-3**

ONE QUALITY ONLY—THE BEST!  
FRESH SUPPLIES DAILY

## York Road Fisheries

SWINDON

WET, DRY or FRIED Tel.: 3680

Rent your T.V. - Washing Machines  
Spin Dryers - Electrical Installations  
from

### D. V. HOLLAMBY LTD.

138 High St., Wootton Bassett, Wilts.  
Telephone 295

ALL LEADING MAKES IN STOCK

**DEMPSTER ENTERPRISES**, offer a modern fleet of 4 and 6 seater self-drive hire cars, for your pleasure and convenience. For advance bookings apply:-

### Dempster Enterprises

38 VICTORIA ROAD, SWINDON  
Tel. 6460

**Howard Autos**, Swindon's Main Cotton Motor Cycle distributors always have a good selection of guaranteed used cars for you to choose from.

### HOWARD AUTOS

134/5 MANCHESTER ROAD  
Tel. 6603

and at 3 WELLINGTON STREET, SWINDON

## HALF-TIME JACKPOT DRAW

TODAY'S WINNING NUMBERS WILL BE ANNOUNCED AT  
HALF-TIME.

The following will assist you to record the numbers and prizes as announced.

1st PRIZE	No.....	Amount £.....
2nd PRIZE	No.....	Amount £.....
3rd PRIZE	No.....	Amount £.....
4th PRIZE	No.....	Amount £.....

Winning numbers will also be published in "Evening Advertiser"

### 'BAILEY'S'

2 Cheney Manor Road - Swindon

NEWSAGENT :: TOBACCONIST  
CONFECTIONER

Personal Attention and Satisfaction  
always assured.

MEET YOUR FRIENDS FOR AN  
ENJOYABLE EVENING AT

### THE KINGSDOWN INN

(Host A. W. Yann)

FULLY LICENSED - ARKELL'S BEERS  
SNACKS, Etc.

Stratton St. Margaret. Tel.: 3283

### A. WHEELER & SON

330 CRICKLADE ROAD

PHONE 2095

FOR QUALITY COALS  
AND PROMPT SERVICE

Ring 4711 or call at  
"The Corner Off Licence"  
115 CRICKLADE ROAD  
for your Wines, Spirits and Beers  
Free Deliveries - Glasses loaned free  
\* \* \* \* \*  
Lowest Terms for Self Drive Cars

---

# Supporters' Club Notes

These notes are being written on the eve of the Cup-tie replay, and also just prior to our Committee Meeting for November.

Consequently, we are prevented, by the requirements of the printers, from referring to matters of current interest, but we are in a position to announce that, at the meeting, our Honorary Competitions Secretary will seek the authority of the Committee for the payment of £1,555 to the Football Club, made up as follows:—

To General Funds	£725
To Floodlight Fund (from current competition profit)	£500
To Floodlight Fund (Derby Draw profit)	£330

---

£1555

---

Those supporters whose regular and patient patronage of our efforts has contributed in any way to this donation, will no doubt feel gratified at this further practical assistance to the Football Club.

We understand that the directors intend, in the near future, to display publicly, figures indicating the present state of the Floodlight Fund.

Such figures will show that a substantial sum is still required to liquidate the balance of the debt, and there must be no relaxing of our efforts, or of your support.

There will be numerous opportunities for supporters still to contribute—the tickets for the Christmas Draw will be on sale

almost simultaneously with the publication of these notes—the weekly competition and the Directors' Jackpot Competition—the half time collections—all provide means whereby spectators may assist as they feel inclined.

We make no apologies for again appealing for an extension of the weekly competition. Approximately 12,000 people are now contributing one shilling per week. The law permits us 15,000, and we shall be very pleased to close the gap. We ask for more collectors, more contributors, **MORE MONEY.**

We were pleased to meet the Honorary Secretary and another official of the Kettering Town Supporters' Club. It is a thriving body with 23,000 members and a very successful weekly competition.

Obviously, the financial assistance given to the Football Club is vital to its continued existence, as we were informed that the gates average 3,000.

Since we have been connected with this club we have come to know a lot about the people of many Wiltshire and other nearby villages, which previously were little more than names to us. Places such as Tilshead, Rowde, East and West Hanney, and many others—all have produced supporters and workers to whom this club owes a great deal.

Thank you once again, country members, for your continued interest and help.

Holders of the lucky programmes on 4th November were: No. 90, Mr. M. Whitmore, 22 Carstairs Avenue, Swindon. No. 306, Not Claimed.

---

## KEY OF THE BOARD

Half-time scores will be given in two sections. First Section indicated by **[1]**. Second Section indicated by **[2]**.

### FIRST SECTION

- A—Aston Villa v. Arsenal
- B—Blackburn v. Birmingham
- C—Blackpool v. Everton
- D—Chelsea v. Bolton
- E—Manchester U. v. Leicester
- F—Nottingham F. v. Burnley
- G—Sheffield U. v. Manchester C.
- H—Tottenham v. Fulham
- I—West Ham U. v. West Bromwich A.
- J—Wolverhampton v. Ipswich T.
- K—Bristol R. v. Derby
- L—Bury v. Swansea
- M—Charlton v. Southampton
- N—Leeds v. Leyton Orient
- O—Liverpool v. Luton T.
- P—Norwich v. Preston N.E.
- Q—Rotherham v. Newcastle
- R—Sunderland v. Middlesbrough
- S—Barnsley v. Bristol C.
- T—Bournemouth v. Coventry

### SECOND SECTION

- A—Crystal P. v. Grimsby
- B—Halifax v. Peterborough
- C—Hull C. v. Reading
- D—Lincoln v. Southend
- E—Northampton v. Newport
- F—Portsmouth v. Bradford
- G—Torquay v. Notts C.
- H—Watford v. Brentford
- I—Accrington v. Workington
- J—Aldershot v. Exeter
- K—Bradford C. v. Crewe
- L—Carlisle v. Rochdale
- M—Hartlepoons v. Chesterfield

The Rendezvous of all Sportsmen . . .

## THE CROWN INN

(Host: Frank Plyer)

Arkell's Best Ales : Fully Licensed  
Snacks, etc.

STRATTON ST. MARGARET Tel. 2339

SUPPORT YOUR HOME

## CIVIL DEFENCE

Plays a vital part in saving lives

Particulars:

CIVIC OFFICES - SWINDON

WIN OR LOSE !  
THE FOOD IN THE

## China Restaurant

IS BEST

\* \* \*

107 COMMERCIAL ROAD

SWINDON 6888

Open Daily 12 noon - 11.30 p.m.

For all Chinese and English Dishes

### ADVANCE BOOKING

Tickets for seats in the Stand for Division III matches may be booked in advance on application to the office, or, by post. Postal applications should be accompanied by a remittance and stamped addressed envelope. Tickets booked by telephone must be collected by 12 noon on Saturdays, or, 4.30 p.m. for mid-week games.

Ticket prices are as follows:

#### NEW STAND

Blocks 'A' and 'E' ...	4/6d.
Blocks 'B' and 'D' ...	5/6d.
Block 'C' ...	6/6d.

#### OLD STAND

Blocks 'F', 'G' and 'I' ...	4/-d.
Block 'H' ...	5/6d.
Centre Box ...	8/-d.

## COATE GARAGE



THE ALCOHOL FUEL

REPAIRS OVERHAULS  
SERVICING ★ REBORING  
TYRES WELDING

Props.: E. V. & W. H. Mattick

MARLBOROUGH ROAD, SWINDON

For something a little different, try

## DON JONES

HIGH CLASS CONFECTIONER  
AND TOBACCONIST

Always a good selection of  
SUCHARDS' - TOBLER  
TERRY'S

Quality Chocolates and Presentation  
Boxes

112 COMMERCIAL ROAD

6012 SWINDON 6012

# Typewriters from £10

FULLY GUARANTEED

**DOBELL SHEARMAN  
& CO. LTD.**

26 HIGH ST. & 33 FARINGDON RD.,  
SWINDON Telephone 4961

Only 800 yards to your Dream Car—

**NEW ALPHA MOTOR Co.**  
(SWINDON) LTD.

**QUEENS DRIVE, SWINDON**

Tel. 5062/63

FOR TOP QUALITY USED CARS

Open 7 days per week from 7 a.m. to 10.30 p.m.  
Servicing for all makes of cars

## DIVISION III

	P.	W.	D.	L.	F.	A.	Pts
Bournemouth	18	11	6	1	35	15	28
Portsmouth	17	10	5	2	30	17	25
Peterborough Utd.	18	11	2	5	48	43	24
Queen's Park Rangers	17	8	5	4	45	29	21
Bristol City	19	9	3	7	30	23	21
Port Vale	19	8	5	6	28	25	21
Reading	18	10	1	7	35	33	21
Crystal Palace	19	7	6	6	39	30	20
Grimsby Town	18	8	4	6	28	28	20
Watford	19	7	6	6	32	34	20
Northampton Town	19	7	5	7	35	26	19
Bradford	18	9	1	8	35	30	19
Shrewsbury Town	19	6	6	7	35	35	18
Coventry City	18	6	6	6	27	29	18
Hull City	16	6	5	5	24	19	17
Halifax Town	16	6	4	6	25	28	16
Southend United	19	5	6	8	25	28	16
Barnsley	18	6	4	8	33	40	16
<b>SWINDON TOWN</b>	<b>19</b>	<b>5</b>	<b>6</b>	<b>8</b>	<b>29</b>	<b>38</b>	<b>16</b>
Notts County	17	6	3	8	32	31	15
Lincoln City	17	4	5	8	26	38	13
Brentford	18	4	2	12	16	39	10
Torquay United	17	4	1	12	29	42	9
Newport County	19	3	3	13	23	44	9

### Chappell's Funeral Service

(Fun. Dir.: A. A. Winchcombe)

196 COUNTY ROAD  
SWINDON

24 hour Service Tel. 6073

Your local "TEAM" for RENAULT  
Sales and Service

## CORONATION CAR SALES

67/68 VICTORIA ROAD

Telephone 4964

---

**SEA VIEW HOLIDAY  
CAMP**

YOUR HOST — Mr. BENNETT

\*\*\*

**WYKE REGIS - WEYMOUTH**  
**Dorset**

"COAL!"  
"COAL!"  
"COAL!"

**J. WILMER**

ST. MARGARET'S ROAD, SWINDON  
Telephone 2535

---

MEET YOUR FRIENDS AT THE

***Southbrook Inn***

(Hosts: Mr. and Mrs. Jack Scutts)

FULLY LICENSED  
CLINCH BEERS, ETC.

SOUTHBROOK STREET, SWINDON  
Tel.: 5837

---

**STOP!**

**LOOK!**

**NU-HOMES**

For all Household Fitments

Paints - Emulsions - Wallpapers  
Kitchen Units and Bathroom Suites,  
etc.

**176a Manchester Road**  
TELEPHONE 2178

---

**FORTHCOMING MATCH . . .**

**F.A. YOUTH CUP (Second Round)**

**SWINDON TN. v. WEYMOUTH**

**THURSDAY NEXT, NOVEMBER 16th, 1961**

**Kick-off 7.30 p.m.**

---

**BRITANNIA  
MOTORS**

Proprietor: A. GODWIN

205-206 RODBOURNE ROAD  
SWINDON PHONE 5303

- TYRES  
NEW AND REMOULD  
CASH OR EASY PAYMENTS
- ACCESSORIES
- QUICK SERVICE AND REPAIRS  
AT SWINDON'S MOST MODERN  
LUBRICATION BAY AND  
WORKSHOP

*For High Class  
Central Heating, Plumbing  
Painting and Decorating  
Electrical Installations  
and Repairs*

**NORTH WILTS**

Sanitary & Heating  
Co. Ltd.

**NEWPORT ST., SWINDON**

'Phone: 5373/4

Always at your service

**L. BIBBY**

For all Types, Rags, Iron and Metal,  
etc. Spot Cash Paid. Please Telephone  
2101 and our van will call.

THE PADDOCK, ERMIN STREET  
STRATTON ST. MARGARET

**Walcot Greengrocer**

G. E. STAMMERS

☛

**1 SUSSEX SQUARE  
SWINDON**

SWINDON **2526**

*CAN ALSO BE YOUR LUCKY NUMBER !!!  
if you ring*

**HOLMES & LUCAS**

14A REGENT STREET :: SWINDON

*for all your*

**TELEVISION, RADIO AND ELECTRICAL REQUIREMENTS**

**LUCKY PROGRAMME**

Please retain your programme. An announcement will be made at half-time of two numbers and the holders will be given a stand seat at the next Division III game. The persons who purchased the programmes bearing the winning numbers should call at the office after the game and claim their seats.

840

**FRIED FISH AND CHIPS**

Always Fresh - Always Hot

**WALCOT FISHERIES**  
**Sussex Square**

Wet fish and frozen foods all refrigerated display.

Telephone Swindon 2731

6 REGENT CIRCUS (NEAR G.P.O.)

Agents for Wessex School of Motoring  
Main Booking Agents for Millers Coaches  
Newsagents & Tobacconists & Confectioners

A. J. D. WOODHOUSE & A. SMITH

**HATTON'S NEWSAGENCY**

For Insurance or Hire Purchase  
CARS - CARAVANS - MOTOR CYCLES, etc.

Consult

**D. & H. HENTY LTD.**

**54 COMMERCIAL RD., SWINDON**  
SWINDON 5258

**PANKHURST**

**The Palace, Gorse Hill,  
Swindon**

MOTOR CYCLE - SCOOTER AND  
THREE-WHEELER SPECIALISTS

Open Mon. to Sat. 9 a.m. - 8 p.m. Phone 5466

**MORGAN'S** IRONMONGERS  
**C.A.S.M.S. (Swindon) Ltd.**

2 SUSSEX SQUARE, WALCOT, SWINDON  
also at 163 RODBOURNE ROAD Tel. 2516  
Paraffin services to all areas town and country  
Everything for the home  
Precision Tools for Engineering Trade,  
Tools for all trades

**Maylott Studios**

For GROUP & SPORT Photographs  
OFFICIAL PHOTOGRAPHER TO  
SWINDON TOWN FOOTBALL CLUB

**31 FARINGDON RD. Tel. 2792**